

Good morning Year 1. Today we are thinking about our wonderful nurses because today is Nurses Day.

English

Attached you will find some writing about Florence Nightingale and some questions for you to answer. Ask an adult to read the text with you and talk about what you think of Florence Nightingale. Then answer the questions.

Draw a picture of Florence Nightingale and write a adjectives about her round the outside. I can think of strong and determined. What can you think of?

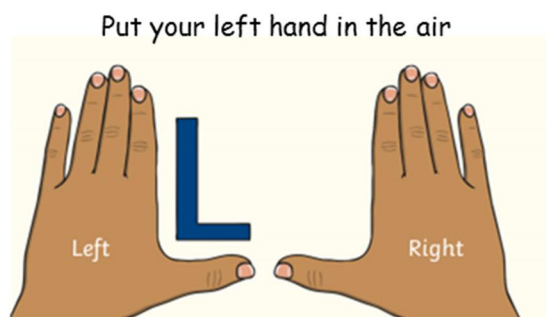
Phonics

Don't forget the daily phonics

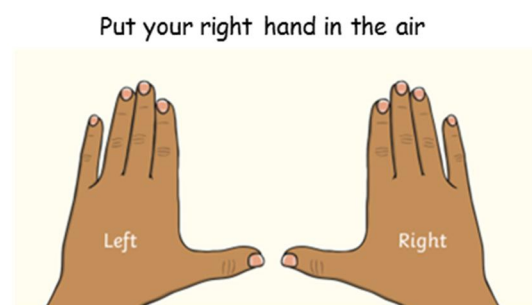
https://www.youtube.com/channel/UCP_FbjYUP_UtIdV2K_-niWw/videos?app=desktop

Maths

We are remembering about left and right and position today.

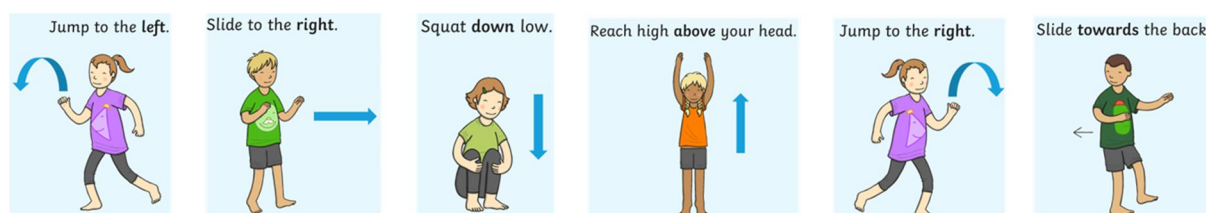


The hand that makes an 'L' is your left hand



The hand that doesn't make an 'L' is your right hand

Now you've got your right and left sorted out, try these instructions - you might want to do them to music. (The hokey cokey or cha cha slide are good for this.)



Can you think of some more movements you could do? Remember to use left and right when you can.

Nurses

As its Nurses Day, collect some of your toys and be their nurse. Remember to take temperatures, apply bandages, give injections and medications and keep their beds tidy.

Can you keep notes on each patient and what you are doing for then to make them feel better.

We would love to see some pictures.

Humphrey and Lulu



Humphrey is examining his maps. I wonder where he would like to go on holiday next year ?
Lulu went outside to sit with the toadstools. She said it was a bit windy and chilly outside!

Have a lovely day. Don't forget to keep sending those lovely photographs of your work.

Mrs Morris and Mrs Turrell